



INSTRUKCJA WCZYTYWANIA KODU PILOTA DO PAMIĘCI SIŁOWNIKA SERII COSMO Z WBUDOWANYM ODBIORNIKIEM RADIOWYM

USERS MANUAL FOR READING THE EMITTER CODE INTO THE WIRELESS COSMO MOTOR

MOBILUS MOTOR Sp. z o.o.
ul. Miętowa 37, 61-680 Poznań
tel.: +48 (61) 825 81 11
fax: +48 (61) 825 80 52
e-mail: info@mobilusmotor.com
www.mobilusmotor.com

Safety guide

- ▶ COSMO rotatable tubular motor is used in automatic operation of roller blinders, grates, gates and awning.
- ▶ After removing the device from the box, check if it is free from any visible damages made in transportation for instance. If such damages have been found, it is crucial to instantly inform the supplier about it. Do not install device
- ▶ Improper installation may lead to personal injury. This is why it is important to proceed according to the manual hereto. It is also important to keep it for reference.
- ▶ Do not let children play with the remote control of the tubular motor.
- ▶ Check regularly the technical condition of the tubular motor. Do not use if requires repair or maintenance.
- ▶ Tubular motor must not be used by persons (including children) who have limited physical, psychical ability or feeling disorder, or persons with no experience or knowledge about the device unless under the supervision or according to users manual provided by persons responsible for the safety of the tubular motor.
- ▶ COSMO tubular motor shall be supplied by 230V~, 50Hz. Connection shall be performed by licensed electrician in accordance with attached electrical schemes and regulations in force.
- ▶ COSMO remote wall holder shall be installed in visible location away from movable elements, on 1,5m from the ground. COSMO remote must also be kept away from movable elements.
- ▶ Tubular motor electrical installations must be equipped with safety disconnection devices.

Initial remarks

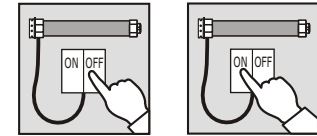
- ▶ Standard holders PICO and PRO series are used for the installation of PICO COSMO and PRO COSMO tubular motors. Installation in the roller and regulation of COSMO limit switches shall be performed according to "installation manual" and users manual of standard tubular motor series PICO and PRO.
- ▶ COSMO tubular motors shall mate with all COSMO remotes.
- ▶ Maximum 8 remotes (channels in case of multichannel remotes) may be read into one tubular motor.
- ▶ The range of the wireless is limited by regulations concerning the maximum power of the remote as well as the conditions of its installation. Designing the location of the remotes it is important to consider 25m range through 2 walls.
- ▶ Declaration of conformity:
We hereby declare, with full responsibility, that PICO COSMO and PRO COSMO tubular motors comply with the following European Norms:
1. 73/23/EWG LV Directive
2. 89/336/EWG Electromagnetic Compatibility Directive

ATTENTION!

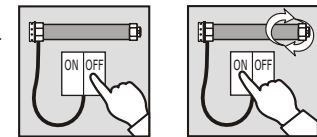
All software and change of the direction of the turning of the tubular motor are confirmed by half-turns of its drive. This is why remote must not be programmed if in extreme UP or DOWN position. It may cause damage.

Entering the MASTER programming mode*

1. Connect to power.
2. Switch on and off the power supply of the tubular motor.

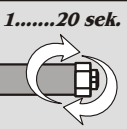


3. 1. Switch on and off the power supply of the tubular motor again. Two half-turns of the drive confirms entering into the programming mode.



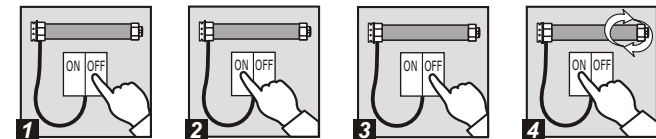
ATTENTION!

If within 20 seconds none of the procedures shall be commenced – tubular motor shall return to its work mode and shall remain not programmed.

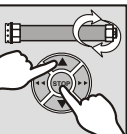


Reading of the MASTER code into the tubular motor memory

1. Enter MASTER programming mode.



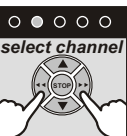
2. Press and hold "stop" and "up" for more than 1 second on the emitter. Drive shall make two half-turns and confirming MASTER read in and tubular motor shall switch to work mode.



Now you can operate the tubular motor or program another remote by means of the MASTER.

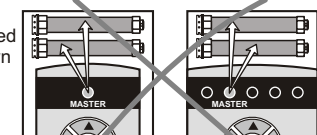
ATTENTION!

In case of multichannel remote (H5, W7, H24), select MASTER channel by means of L or P buttons.



INDICATION!

For convenience it is recommended that each tubular motor has its own separate MASTER remote (separate channel in case of multichannel remote).

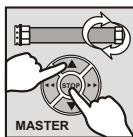


Avoid situations where several tubular motors shall have one common MASTER remote (common channel).

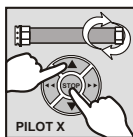
* MASTER- remote or channel (in case of multichannel remote) read into the tubular motor as first. Enables programming of the subsequent remotes.

Programming of the second and each subsequent remote

1. Press and simultaneously hold, on MASTER remote control, "stop" and "up" buttons for more than 5 seconds until drive makes two half-turns confirming entering into the programming mode.



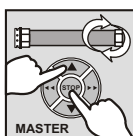
2. On second remote or channel which we wish to program (in case of multichannel remote) press and simultaneously hold, "stop" and "up" buttons for more than 1 second until drive makes two half-turns.



Another remote or channel (in case of multichannel remote) has been red into the memory of the tubular motor.

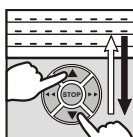
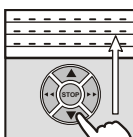
ATTENTION!

We can start programming another remote. If within 20 seconds none of the procedures shall be commenced – tubular motor shall return to its work mode. It is also possible to switch to work mode manually by means of the MASTER. To switch to work mode manually press and hold "stop" and "up" buttons for more than 5 seconds. In both cases the return to work mode shall be confirmed by two half-turns of the drive.



The change of the direction of the work of tubular motor.

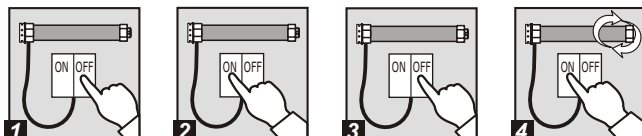
1. Having programmed the remote of the tubular motor check if "UP" and "DOWN" buttons correspond to lifting and lowering the roller blinds. If not, press and simultaneously hold "stop" and "up" buttons for more than 5 seconds on any remote programmed for this tubular motor.



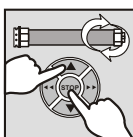
Drive shall make two half-turns and the direction of the work of tubular motor shall be switched.

Deleting codes from all remotes from the memory of the tubular motor

1. Enter programming mode.



2. On optional remote, which we wish to program as MASTER, press and simultaneously hold "stop" and "up" buttons for more than 5 seconds. This remote becomes the MASTER remote and all other remotes shall be deleted from the memory of the tubular motor. The drive makes two half-turns confirming the operation.



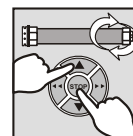
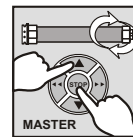
ATTENTION!

MASTER can only be deleted replacing it with a new one.

Deleting individual remote controls (channels)

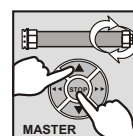
There is a possibility to delete only one of the programmed remote controls. To do so you must:

1. Press and simultaneously hold, on MASTER remote control, "stop" and "up" buttons for more than 5 seconds until drive makes two half-turns confirming entering into the programming mode.
2. Press and hold "stop" and "up" for more than 1 second on the remote (channel) we wish to delete. Drive shall make two half-turns and the code of the remote (channel) shall be deleted from the memory of the tubular motor.



ATTENTION!

If within 20 seconds none of the procedures shall be commenced – tubular motor shall return to its work mode. It is also possible to switch to work mode manually by means of the MASTER. To switch to work modes manually press and hold "stop" and "up" buttons for more than 5 seconds. In both cases the return to work mode shall be confirmed by two half-turns of the drive.



The description of remote buttons

a) COSMO H & W

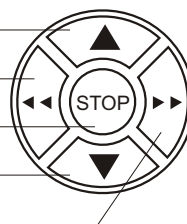
UP button

Selection of L channels*

Stop button

DOWN button

Selection of P channels*



b) COSMO G

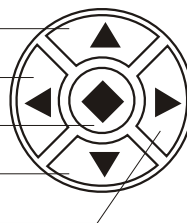
UP 1 button

UP 2 button

STOP button

DOWN 1 button

DOWN 2 button

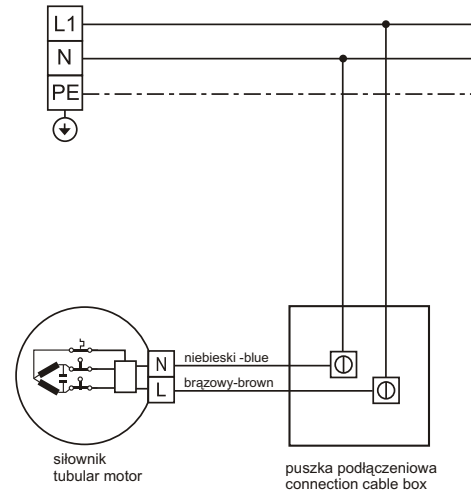


* multichannel remote only

Tubular motor shall be supplied 230V – according to attached connection schemes.

a) seria PICO COSMO

230V 50Hz



b) seria PRO COSMO

230V 50Hz

