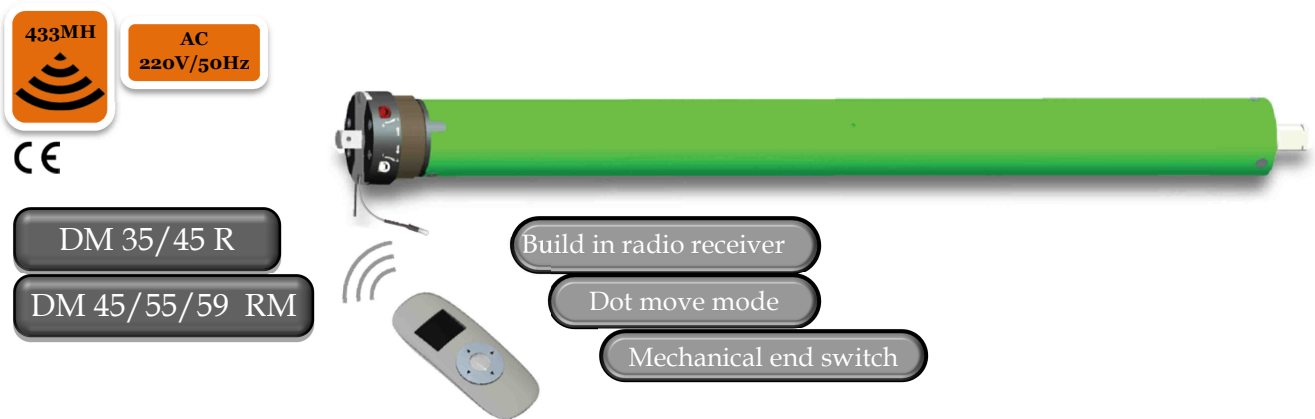


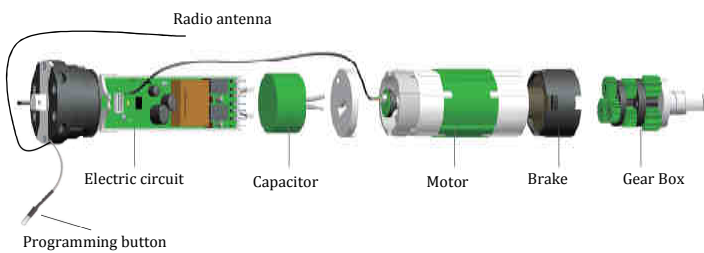
PROGRAMING MANUAL

Central Office, Production Plant in: Bielsko – Biala
ul. Warszawska 153, 43-300 Bielsko Biala, Polska
tel. +48 33 81 95 300, fax. +48 33 82 28 512

Production Plant:
ul. Gostawicka 3, 45-446 Opole, Polska
tel. +48 77 40 00 000, fax. +48 77 40 00 006
e-mail: Aluprof@aluprof.eu

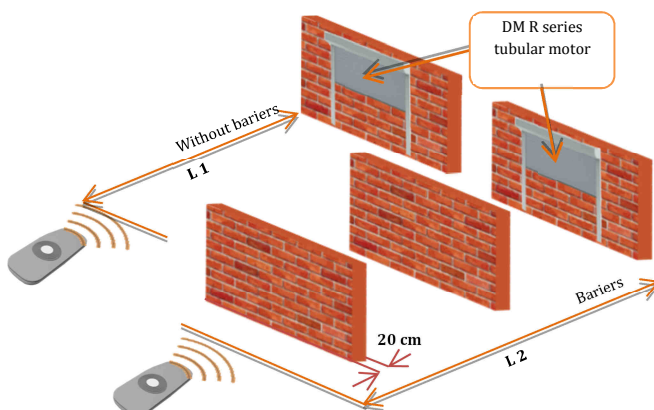


Technical specifications



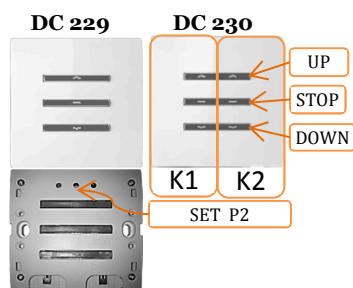
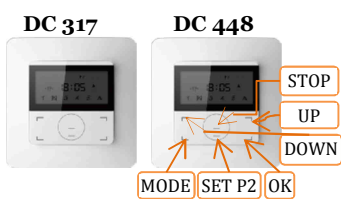
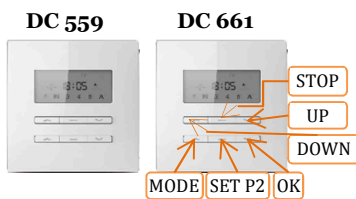
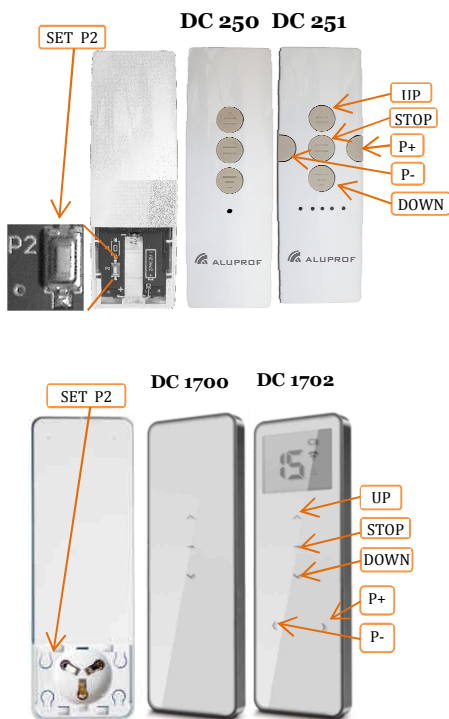
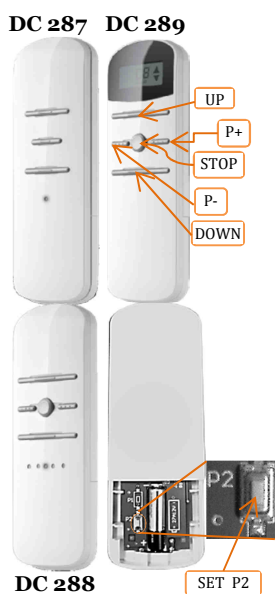
1. Setting the tubular motor by a transmitter.
2. Ability to store up to 20 channels in one tubular motor. Each next channel will erase the first one.
3. Mechanical end switch.
4. Audio and moment indication when programming the tubular motor

Transmission distance



	L1	L2	Frequency
230V/50Hz	200m	35m	433.92 MHz

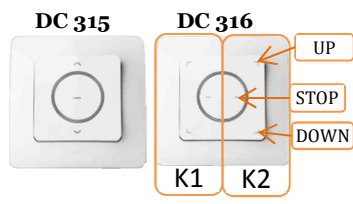
Remote controllers



To program the clock and the date, please hold "MODE" button for 4 seconds until the numbers on the display will flash. Change the numbers using the "UP" & "DOWN" button, if all the settings are set up please press "OK" button.



Activation of the P2 SET button in remote controller DC115A is performed by a combination of both keys "STOP" and "UP".



Activation of the P2 SET button in remote controller DC315 and DC 316 is performed by a combination of both keys "STOP" and "UP".

LEGEND :
UP - activation of this button will move roller shutter up
DOWN - activation of this button will move roller shutter down
SET P2- activation of this button will bring the tubular motor in to programming
P+ - activation of this button will switch to the next channel
P- - activation of this button will switch to the previous channel.
K1 -channel one buttons
K2 -channel two buttons
MODE - setting up of time and date button

1/ Electrical connections (Fig. 1)

After connecting the tubular motor to the power supply, 3 beeps will be heard immediately (1x BIP), and if he contains a remote controller in the memory he will make a short movement up and down.

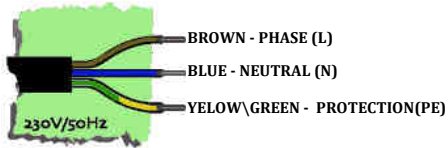
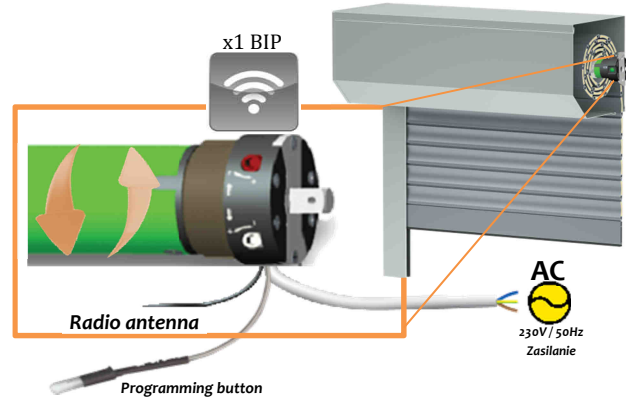
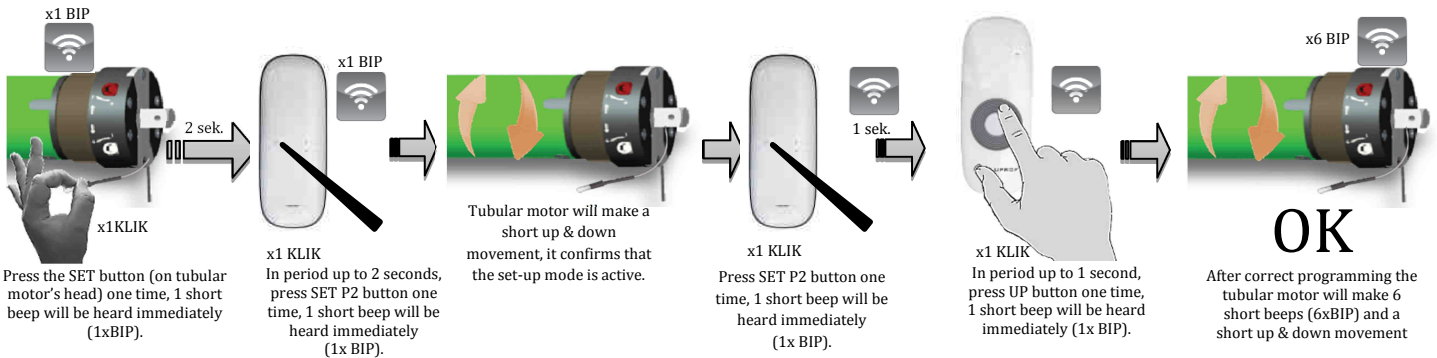


Fig. 1



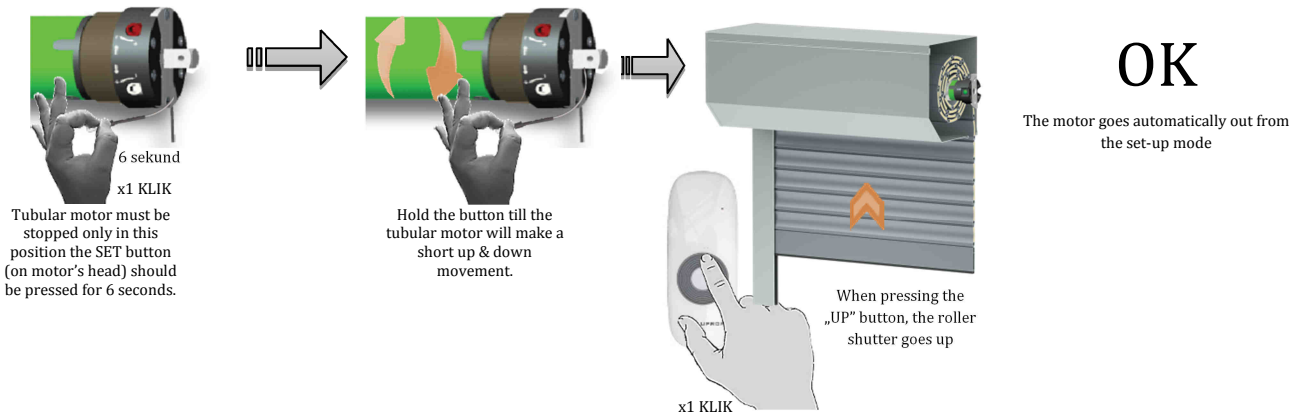
2/ Memorizing the first transmitter.

To memorize the first transmitter follow:

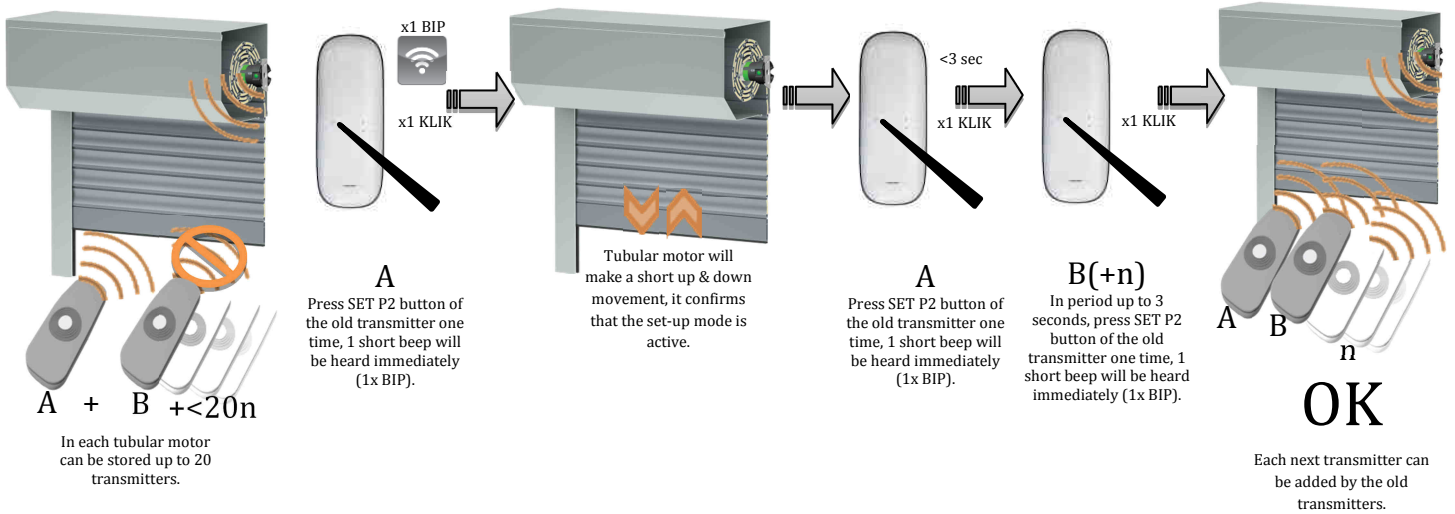


3/ Programming the direction of movement.

After the transmitter has been memorized, and pressing the "UP" or "DOWN" button the tubular motor performs the movement opposed to the indicated we should:

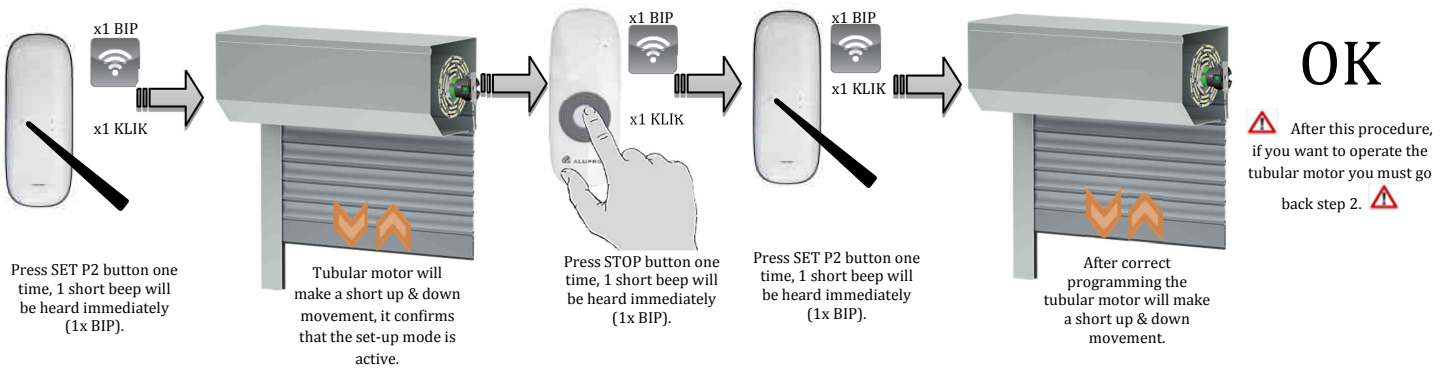


4/ Memorizing additional transmitter.



5/ Erasing the memory.

To clean up emitter means deleting all the memory of emitter and limit switch in the motor receivers. ⚠



6/ Without support mode.

